

شركة ذمير للمقاولات  
**THAMEER CONTRACTING CO.**  
Roads and Construction Works



**Profile 2023**





***Thameer Contracting Co.***





## ▶ Contents

- About Us , Our Mission, Our Vision, Our Motto
- Company Documents and Certificate
- Orgnization Chart
- Management Staff
- Project Managment Staff
- Asphalt Equipment List
- Earth Work equipment List
- Earth Work (Cutting, Filling, Leveling and Compacting)
- Asphalt Work
- Milling Work
- Road Marking
- Asphalt Plant
- Internlock Curbstone
- Building Work
- Breakwater
- Fence Work
- Dewatering
- Porta Cabin
- Safety (PPE-HSE)
- Transportation
- Logos (Contractors and Cleint)
- Contract Details







## ▶ About Us

**Thameer Contracting Company** with the vision to take active part in the construction field with provision of all types of construction machinery to our valued clients; meeting the construction machinery and equipment supply requirements of Kingdom of Saudi Arabia market of all and not limited to Road Works, development and construction in the major sectors and fields such as Oil, Gas, Water, Agriculture, Power, Industry and Commercial sectors.

## ▶ Our Mission

Our mission is simple and we are committed to give our each valued clients a critical competitive advantage of 360 degree solution in construction work, Road Works, development and construction of complete infrastructure. Provision of complete construction solution for different variety of engineering projects.

Our business model is based on provision of diversified Road Works construction, and development services available at a single contact point; we deploy technical team of engineers on every project which has vast experience. Our overall mission is establishment and development of strong relations with our clients, suppliers and employees

## ▶ Our Vision

To be the leading provider of General Services in K.S.A. To be recognized as and rewarded for being a leader in engineering construction, execution and management of mega projects. Provision of professional engineering technical solution, to construction industry for a variety of different range of large and mega projects in Kingdom of Saudi Arabia.

Our vision for the future is to establish professionalism in all aspects of our business and dealings. Keeping the emphasis on client and customers first; with the best choice option for all kind of construction projects meeting the emerging demand and needs of the industry in KSA.

## ▶ Our Motto

Quality Construction since **09-08-1434H** years of our incorporation by 'good performance' through sound planning and management of projects and quality work which stands-out **Thameer Contracting Company**

We aim to achieve our goal by providing value-added construction services to our clients by creating a successful partnership with them throughout the construction process. Our pledge is to establish lasting relationships with our clients by exceeding their expectations and gaining their trust through exceptional performance by every member of the construction team.

To perform for our clients and customers the highest level of quality construction services at fair and market competitive prices. To ensure the longevity of our company through repeat and referral business achieved by client satisfaction in all areas including timeliness, attention to detail and service-minded attitudes. Maintain the highest level of professionalism, integrity, honesty and fairness in our relationship with our suppliers, subcontractors, professional associates and clients.





٧٠٠٣٤٦٠٥٦٠ : الرقم الموحد  
١٠١٠٣٨٥٣٤١ : رقم المنشأة  
١٤٣٤/١٠/٠٨ : التاريخ

شهادة تسجيل الشركة  
Company Registration Certificate

وزارة التجارة  
Ministry of Commerce

الاسم التجاري للشركة: شركة ذمير للمقاولات شركة شخص واحد  
نوعها: ذات مسئولية محدودة  
مدة الشراكة: ٩٩ سنة  
مركزها الرئيسي: ٦٧٤٩، سعة بن عبدالرحمن الأول، الفجاء، ٣٢٢٤  
هاتف: ١٤٢٤٥  
النشاط: للاطلاع على بيانات الأنشطة الرجاء مسح الرمز التجاري  
رأس المال: ١٠٠٠٠٠٠ ريال سعودي  
المديرون: 1: محمد عبدالله حسين بن متاع

١٤٢٤٥ : الرمز البريدي  
١٤٤٤/٠٢/١٩ : تبدأ من : ١٤٤٤/٠٢/١٩ : جنسيتها : سعودي  
١٥٤٣/٠٢/١٩ : وتنتهي في : ١٥٤٣/٠٢/١٩

١٤٢٤٥ : حسب ما نص عليه عقد الشركة  
سجلات المدير/المديرون :  
١٥ :  
14 :  
13 :  
11 :  
9 :  
7 :  
5 :  
3 :  
2 :  
4 :  
6 :  
8 :  
10 :  
12 :  
14 :  
16 :

الرياض : بتاريخ : ١٤٤٤/٠٨/٠٢  
بأنه تم تسجيل الشركة المذكورة أعلاه بمدينة : الرياض  
٢٣٠٢١١٨٧٤٥٣ : بموجب الرضام رقم :  
١٤٤٩/٠٢/١٩ :  
ويشهد مكتب السجل التجاري بمدينة : الرياض  
وتنتهي صلاحية الشهادات في : ١٤٤٩/٠٢/١٩

QR Code

To Verify The Information Of This Certificate Visit <https://mc.gov.sa>  
+966 11 294 4444 | Riyadh 11561 Kingdom of Saudi Arabia | المملكة العربية السعودية | WWW.MC.GOV.SA | MC@GOS.A @FIVD





VAT Certificate



تاريخ الإصدار: 2023/01/21  
الرقم المميز: 3115300669



الهيئة العامة للزكاة والدخل  
General Authority of Zakat & Tax



شهادة تسجيل في ضريبة القيمة المضافة  
VAT Registration Certificate

تشهد الهيئة العامة للزكاة والدخل بأن المكلف أدناه مسجل في ضريبة القيمة المضافة بتاريخ 2023/01/21

Hereby, The General Authority of Zakat & Tax (GAZT) certifies that the taxpayer below is VAT registered on 21/01/2023

Taxpayer Name:	شركة ذمير للمقاولات شركة شخص واحد	اسم المكلف:
VAT Registration Number:	311530066900003	رقم التسجيل الضريبي:
Effective Registration Date:	2023/02/01	تاريخ نفاذ التسجيل:
Taxpayer Address:	الرياض، النسيم الش، النخيل، 14245	عنوان المكلف:



كمكلف مسجل في ضريبة القيمة المضافة، لا يجوز لك تحصيل ضريبة القيمة المضافة من عملائك قبل تاريخ نفاذ التسجيل بالضريبة. في حال تبين غير ذلك، ستقوم الهيئة العامة للزكاة والدخل بتنفيذ الغرامات المستحقة

هذه الوثيقة مرسله من النظام الآلي ولا تحتاج إلى توقيع  
- الهيئة العامة للزكاة والدخل -





**Management Staff**

Designation	Nationality	Units	Number of Person
General Manager	Saudi	Nos.	1
Executive Manager	Saudi & Pakistani	Nos.	2
Project Manager	Pakistani	Nos.	2
Project Coordinator	Pakistani	Nos.	1
Manager HR	Saudi	Nos.	1
Finance Manager	Egyptian	Nos.	1
Accountant	Sudani / Egyptian	Nos.	2
Documents Controller	Pakistani	Nos.	1
QC & QA Manager	Pakistani	Nos.	4
Equipment Manager	Egyptian	Nos.	1
Site Engineer	Pakistani	Nos.	4
Planning Engineer	Pakistani	Nos.	1
Chief Surveyor	Pakistani	Nos.	1
Quantity Surveyor	Pakistani	Nos.	2
Site Supervisor	Pakistani	Nos.	4
Driver Trucks	Pakistani	Nos.	40
Equipment Operators	Pakistani	Nos.	20
Technical Labors	Pakistani & Indian	Nos.	20
Labor	Pakistani & Indian Bangali & Egyptian	Nos.	250

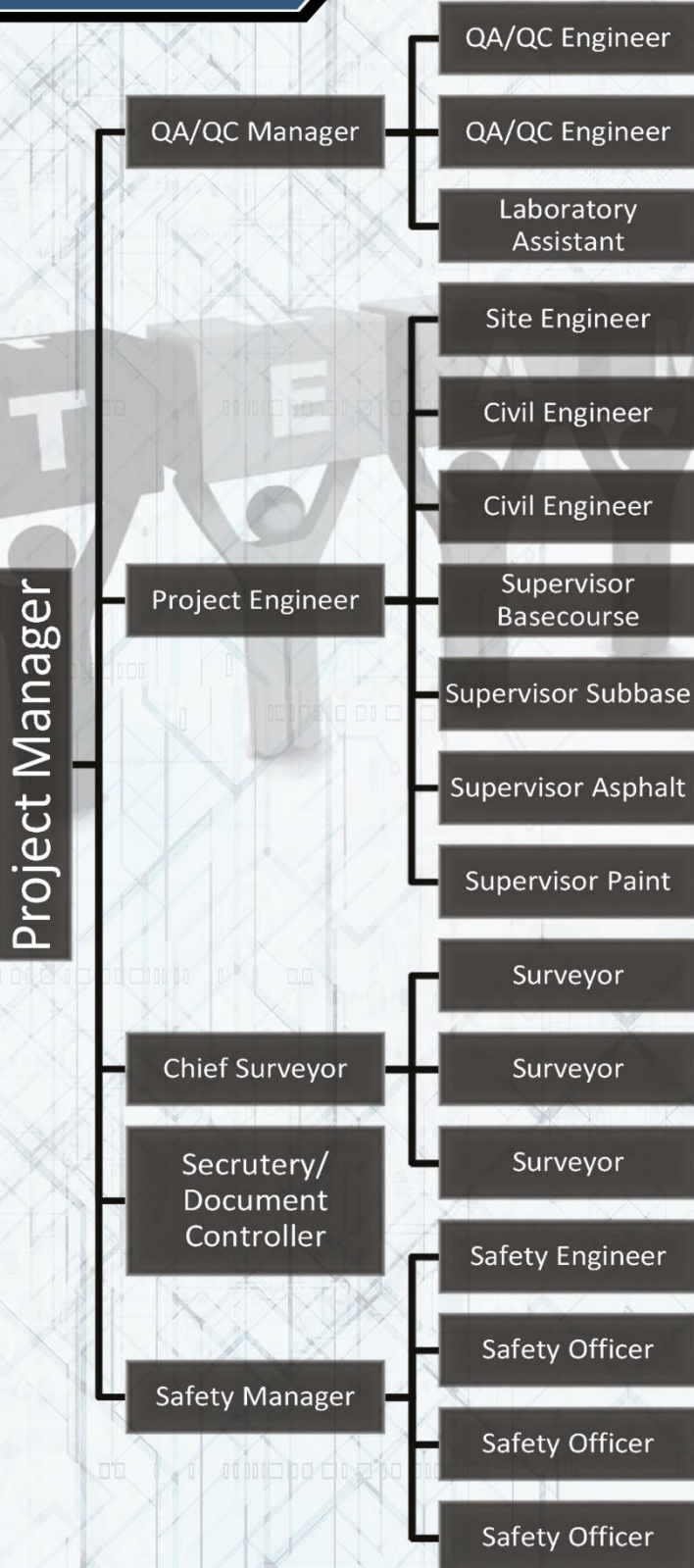
**Note: Even more manpower we can increase depend on project demanded upto 1500.**

**All Manpower registered under JV. Company**





**Project Management Staff**







## ▶ Asphalt Equipment List

No.	Equipment / Machinery	Manufacture	Model	Qty
<b>Dynapac Paver 2021 6 Meter</b>				
1	Asphalt Paver Dynapac 2021	Dynapac	2021	1
2	Tire Roller	Hamm	2016	1
3	Steel Roller	Dynapac	2017	1
4	Skid Steer Loader S130	Bobcat	2015	1
<b>Vogele Paver 2012 and 2015 6 Meter</b>				
1	Asphalt Paver 1800-2	Vogele	2012 / 2015	1
2	Tire Roller HD90	Hamm	2003	1
3	Steel Roller CB-534D	Cat	2005	1
4	Skid Steer Loader S130	Bobcat	2011	1
<b>Caterpillar Paver 2010 6 Meter</b>				
1	Asphalt Paver AP-655D	Cat	2010	1
2	Tire Roller 2748	Hamm	2001	1
3	Steel Roller DD 90 HF	Ingersoll Rand	1995	1
4	Skid Steer Loader S130	Bobcat	2010	1
<b>Vogele Paver 2009 6 Meter</b>				
1	Asphalt Paver 1800-1	Vogele	2009	1
2	Tire Roller CG-15C	Dyanapac	2002	1
3	Steel Roller 90 HF	Ingersoll Rand	1997	1
4	Skid Steer Loader S130	Bobcat	2007	1
<b>Asphalt Milling Machine</b>				
1	Milling Machine 2 Meter	Wirtgen	2007	1
2	Milling Machine Bobcat 1 Meter	GF	2011	1
<b>Road Marking Machine</b>				
1	Road marking Machine	Airfield Marking	2008	1

**Note: Equipment Increase depend on requirement...**





▶ Earth Work Equipment

No.	Equipment Type	Manufacture	Qty
1	Excavator	Caterpillar / Hyundai	46
2	Loader / Shovel	Caterpillar	4
3	Trailer	Mercedes/Volvo	6
4	Dump Trucks	Mercedes/Volvo	15
5	Grader	Caterpillar	4
6	Vibratory Compactor 25 Ton	Danapac/Hamm	4
7	Bulldozer	Caterpillar	6
8	Water Tanker	Mercedes/Volvo	3
9	Roller Compactor 10Tons	Caterpillar/Danapac	2
10	Boom Truck 10 Ton	Mercedes	1
11	Hand Compactor 5 Ton	N/A	4
12	Vibratory Rammer 6 Ton	N/A	6

*Note: Equipment Increase depend on requirement. TCC Equipment register with J.V.*

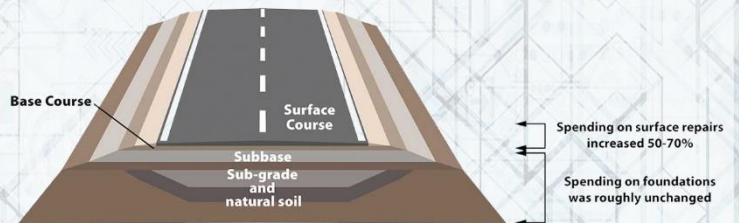
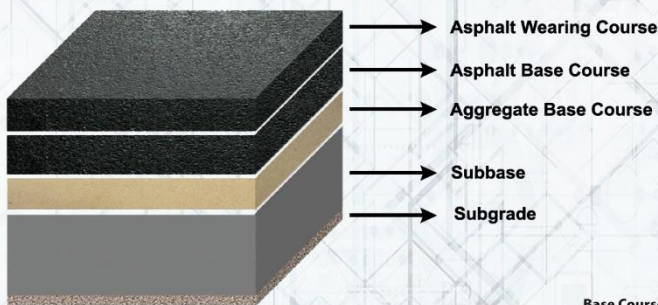






## Contents of Earth and Asphalt Works

No.	Method of Road Work	Details of Works
1	Cutting and removing	Demolition and Removal Waste
2	Leveling and compacting	Grading and compacting with 90% Compaction Test
3	Backfilling and Subgrade	Prepare the Select Filling and Subgrade with 95% compaction
4	Subbase	Prepare the Subbase with 95% Compaction test
5	Aggregate Base Course	Prepare the Aggregate Base Course
6	MC1 ( Prime Coat )	MC1 Spray
7	Asphalt Base Course	Apply Asphalt Base Course
8	RC2 ( Tack Coat )	RC2 Spray
9	Asphalt Wearing Course	Apply Asphalt Wearing Course
10	IRI Test	International Roughness Index Test
11	Asphalt Compaction Test	Asphalt Core Test







## ▶ Earth Works

### *Cutting, Leveling and Backfilling*

In Earth Works, Cut and Fill is the process of constructing a Building, Railway, Roads or Canal whereby the amount of material from Cuts roughly matches the amount of fill needed to make nearby embankments, so minimizing the amount of construction labor.

**Thameer Contracting Company has a Professional Management team in this field. Our team manage all the tasks Independently. So teamwork is our slogan.**







## Earth Works







## ▶ Earth Works

### ***Subgrade***

In transport engineering, subgrade is the native material underneath a constructed road, pavement or railway track. It is also called formation level. The term can also refer to imported material that has been used to build an embankment.

**Thameer Contracting Company has a Professional Management team in this field. Our team manage all the tasks Independently. So teamwork is our slogan.**







## Earth Works

### **Subbase**

In highway engineering, subbase is the layer of aggregate material laid on the subgrade, on which the base course layer is located. It may be omitted when there will be only foot traffic on the pavement, but it is necessary for surfaces used by vehicles. Subbase is often the main load-bearing layer of the pavement.

**Thameer Contracting Company has a Professional Management team in this field. Our team manage all the tasks Independently.**







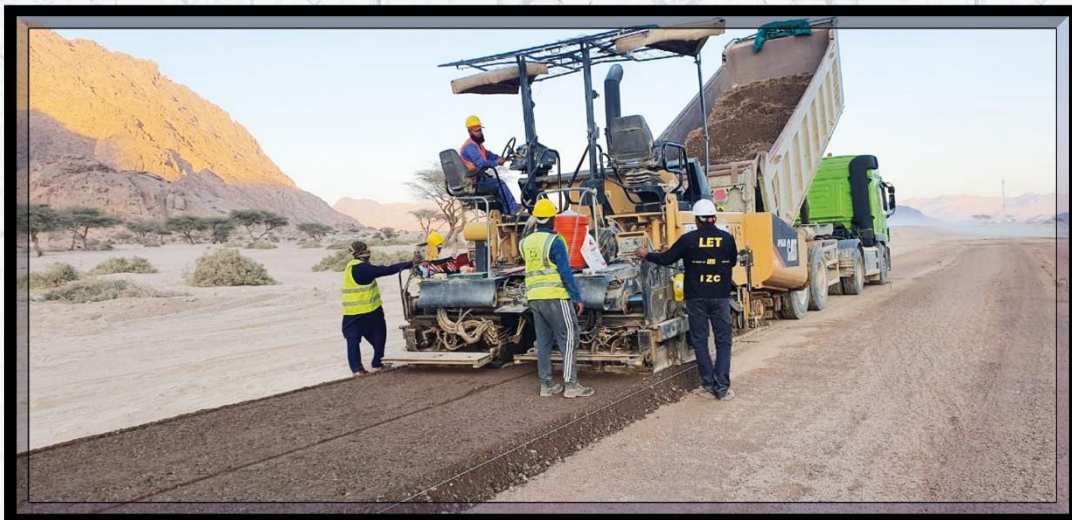
## ▶ Earth Works

### **Aggregate Base Course**

Aggregate Base Course often referred simply as ABC, has certain desirable properties. Base Course in pavements refers to the sub-layer material of an asphalt roadway and is placed directly on top of the undisturbed soil (Sub-Grade) so as to provide a foundation to support the top layers of the pavement. It is typically made of a recipe of different sizes of aggregate rock inclusive of 1" to fine dust. Aggregate is made from quarried rock, recycled asphalt, or concrete.

Aggregate Base is used as the base course under asphalt pavement roadways, under concrete slabs and structural foundations, and as backfill material for underground pipelines and other underground utilities within a roadway. It is placed by means of attentive spreading and compacting to a minimum of 95% relative compaction, providing the stable foundation needed to support a pathway, foundation, driveway or roadway.

**Thameer Contracting Company has a Professional Management team in this field. Our team manage all the tasks Independently.**



**Project Neom Mountain Road**





## ▶ Prime Coat & Tack Coat

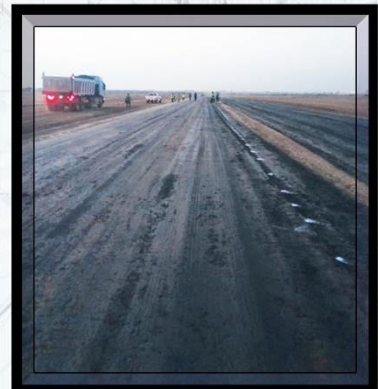
### **Prime Coat**

Prime coat typically is application of low viscosity Bitumen over a granular base, preparing it for laying an asphalt mixture on it. A prime coat performs several important functions. Coats and bonds loose material particles on the surface of the base. Hardens or toughens the surface of the base.

### **Tack Coat**

Tack coat is a thin layer of asphalt that ensures the bonding between old and new asphalt layers. It is also used in construction or for renovation of roads to achieve better strength. Tack coat is sticky, which is very important for forming a secure bond between the two layers of asphalt.

**Thameer Contracting Company has a Professional Management team in this field. Our team manage all the tasks Independently.**



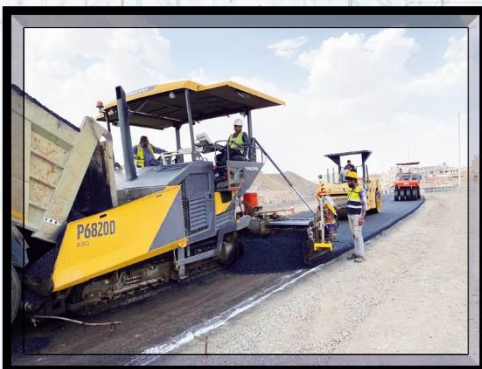




## ▶ Asphalt Works

### **Hot-Mix Asphalt Concrete** ( commonly abbreviated as HMA )

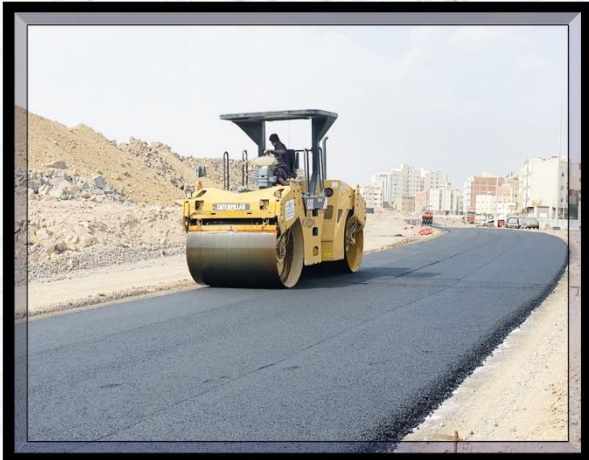
This is produced by heating the asphalt binder to decrease its viscosity, and drying the aggregate to remove moisture from it prior to mixing. Mixing is generally performed with the aggregate at about 300 °F (roughly 150 °C) for virgin asphalt and 330 °F (166 °C) for polymer modified asphalt, and the asphalt cement at 200 °F 195 °C). Paving and compaction must be performed while the asphalt is sufficiently hot. In many countries paving is restricted to summer months because in winter the compacted base will cool the asphalt too much before it is able to be packed to the required density. HMA is the form of asphalt concrete most commonly used on high traffic pavements such as those on major highways, racetracks and airfields. It is also used as an environmental liner for landfills, reservoirs, and fish hatchery ponds.







## Asphalt Works

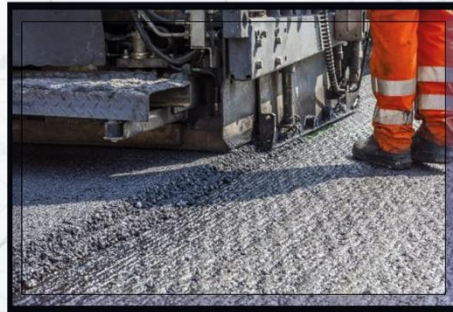
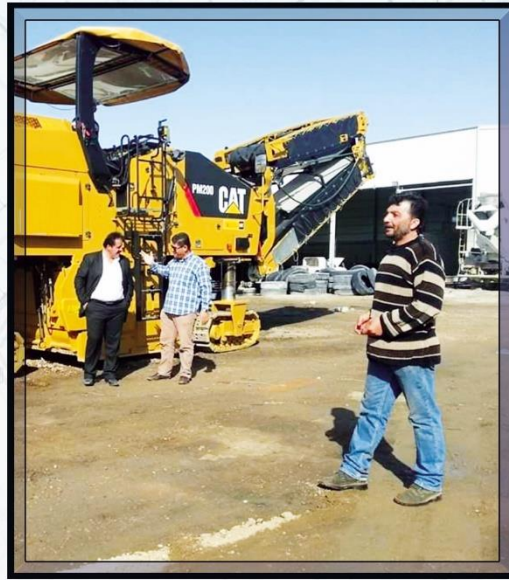






## ▶ Contract Details

Pavement milling (cold planing, asphalt milling, or profiling) is the process of removing at least part of the surface of a paved area such as a road, bridge, or parking lot. Milling removes anywhere from just enough thickness to level and smooth the surface to a full depth removal. There are a number of different reasons for milling a paved area instead of simply repaving over the existing surface.







## ▶ Road Marking Work

Road surface marking is any kind of device or material that is used on a road surface in order to convey official information; they are commonly placed with road marking machines (or road marking equipment, pavement marking equipment). They can also be applied in other facilities used by vehicles to mark parking spaces or designate areas for other uses.

Road surface markings are used on paved roadways to provide guidance and information to drivers and pedestrians. Uniformity of the markings is an important factor in minimizing confusion and uncertainty about their meaning, and efforts exist to standardize such markings across borders. However, countries and areas categorize and specify road surface markings in different ways—white lines are called white lines mechanical, non-mechanical, or temporary. They can be used to delineate traffic lanes, inform motorists and pedestrians or serve as noise generators when run across a road, or attempt to wake a sleeping driver when installed in the shoulders of a road. Road surface marking can also indicate regulation for parking and stopping.



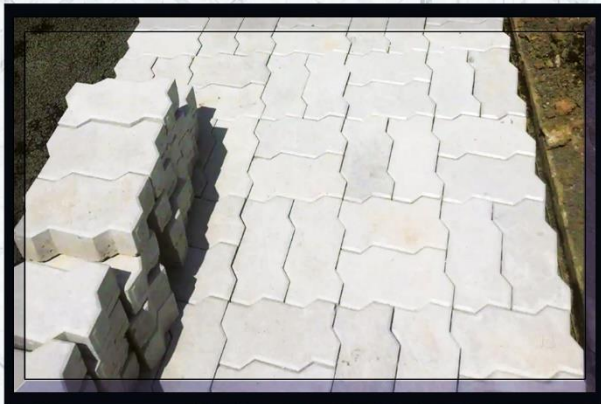
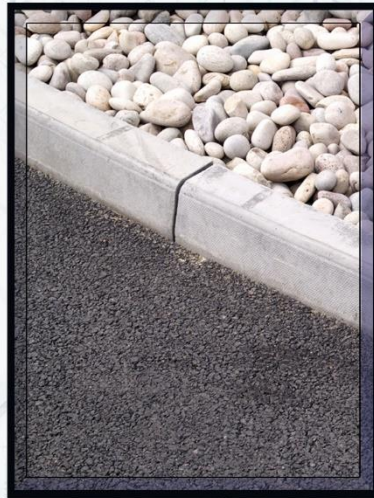
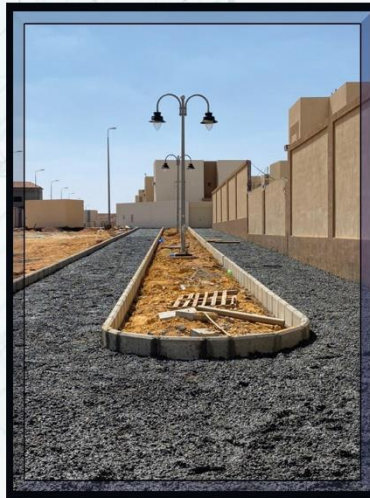




## ▶ Interlock and Curbstone

Interlock and Curbstone is a concrete block installation with paver and by hand, Interlock and Curbstone have many design and size. Interlock and Curbstone using roads footpath, streets and walking track.

***Thameer Contracting Company has a Professional Management team in this field.  
Our team manage all the tasks Independently. Teamwork is our slogan...***







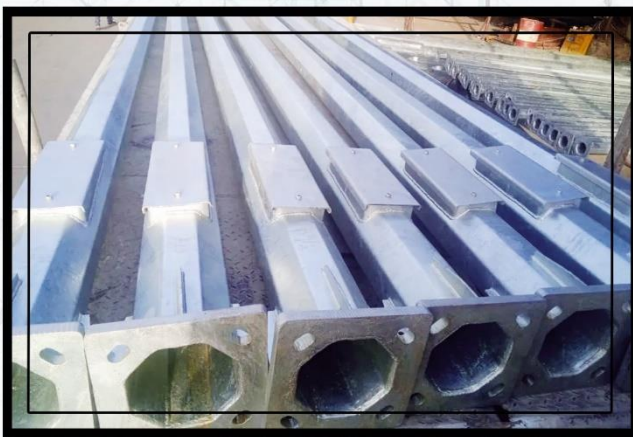
## Street Light Pole ( low Voltage work )

Light Pole means a pole used primarily for lighting streets, parking areas, parks or pedestrian paths

We are a professional light poles and solar street lights, We supply and apply with cheap price and guaranteed quality. Street Light, Garden Light, Galvanized Pole with beautiful and different designs.....



Jeddah Project with Nesma







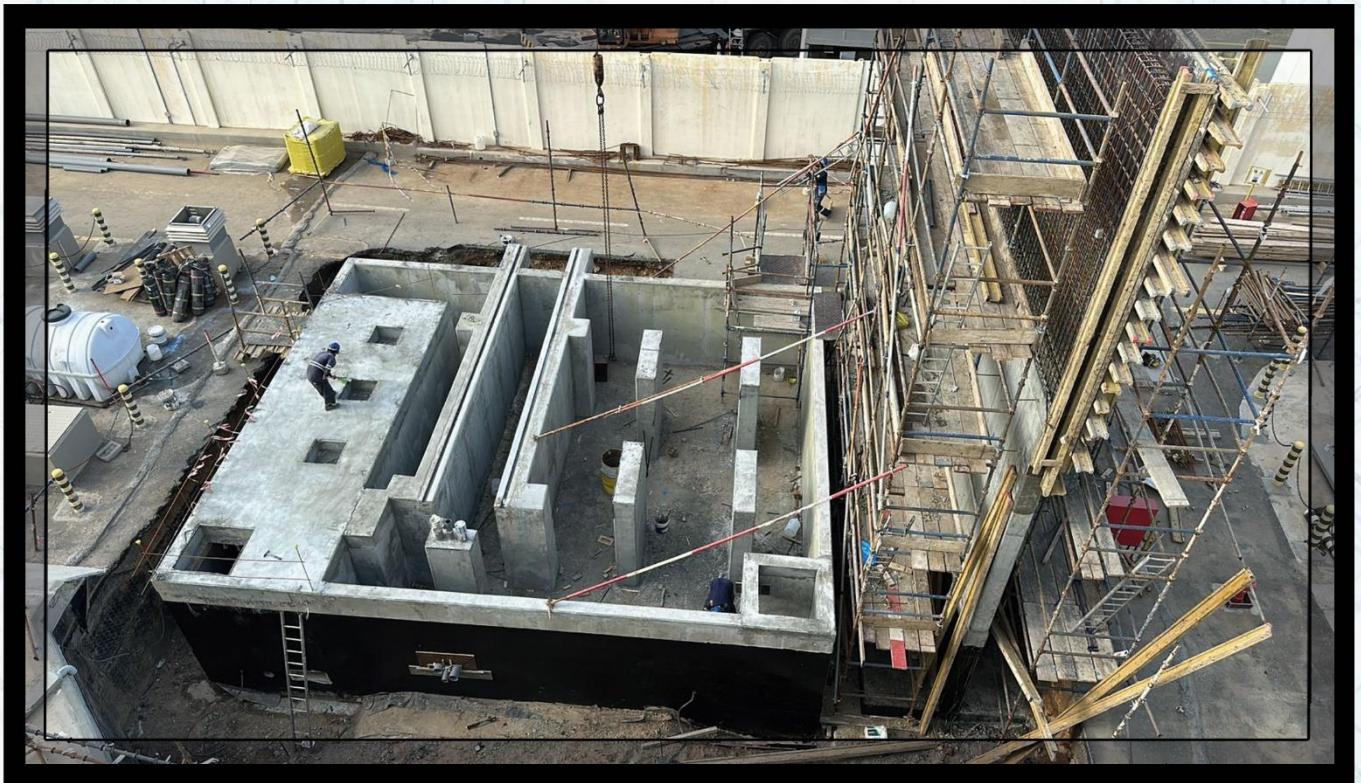
## ▶ Structure Works

**Structural Work** defined any and all engineering, procurement or construction of the Facility or components thereof relating to the structural capacity, integrity or suitability of any load bearing elements or underlying civil work for any portion of the Facility.

**Thameer Contracting Company has a Professional Management team in this field. Our team manage all the tasks Independently. Teamwork is our slogan...**







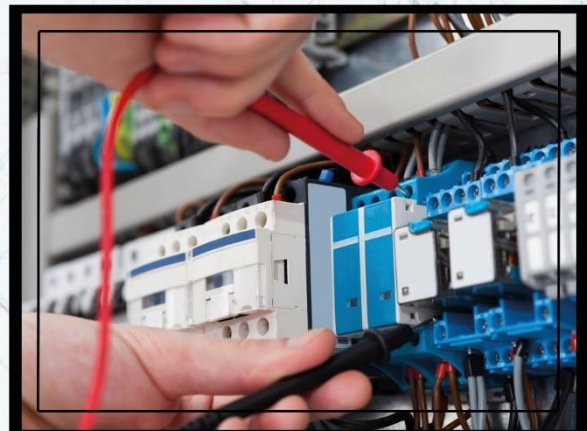




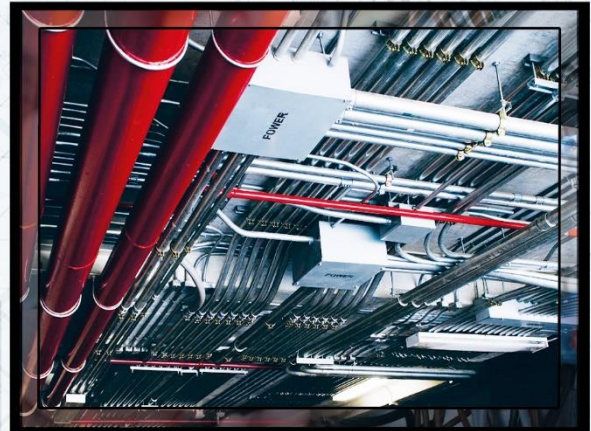
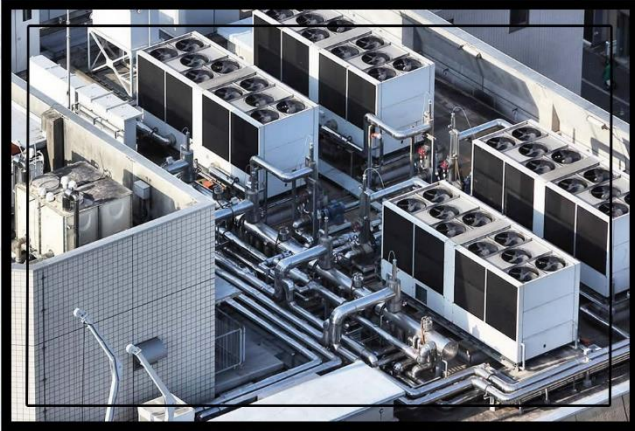
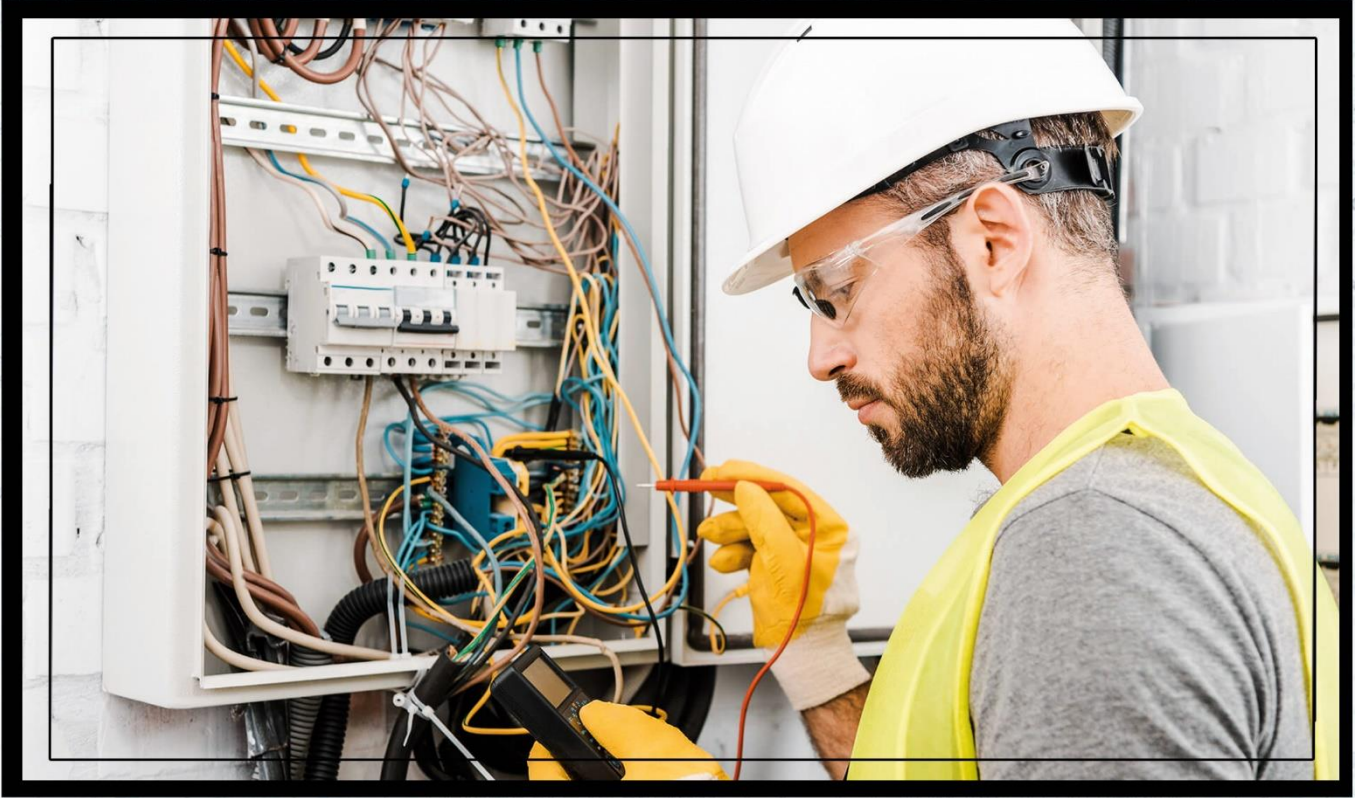
## ▶ MEP Works

**Mechanical, electrical and plumbing (MEP)** refers to the installation of services which provide a comfortable space for the building occupants. In residential and commercial buildings, these elements are often designed by a specialized MEP engineering firms. The part of Mechanical in the overall MEP system is almost 70% of the total work. MEP's design is important for planning, decision-making, accurate documentation, performance- and cost-estimation, construction, and operating/maintaining the resulting facilities.

***Thameer Contracting Company has a Professional Management team in this field. Our team manage all the tasks Independently. Teamwork is our slogan...***







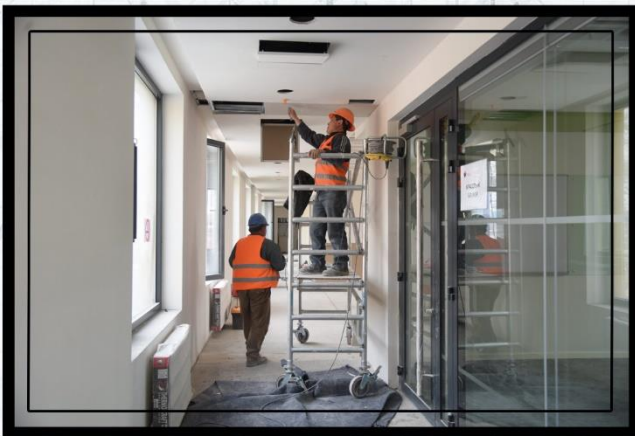




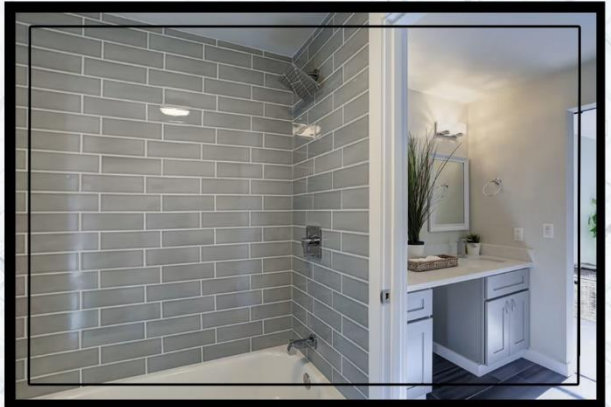
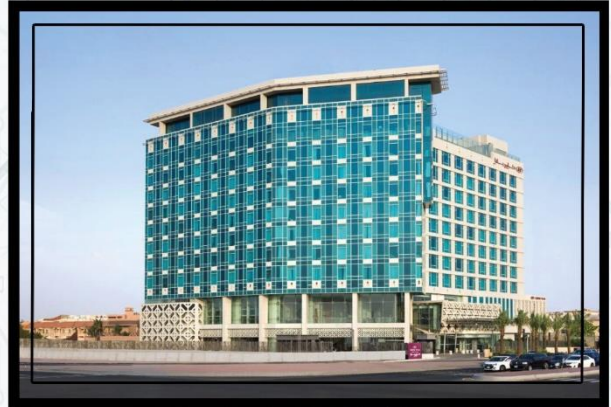
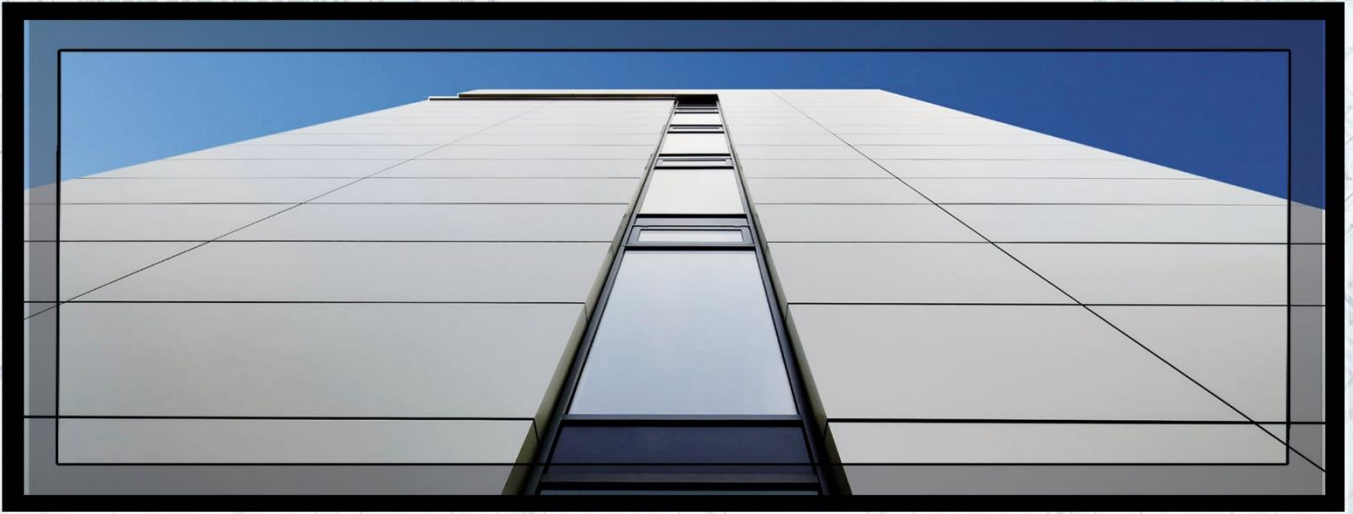
## Finishing & Maintenance Works

**Thameer construction**, finishing works and renovations unit encompasses an array of different services. The client can thus benefit from a completely integrated offer.

- 1- Floor Tiles and Coating
- 2- Paint & Wall Covering
- 3- Masonry
- 4- Renovation and Maintenance
- 5- Carpentry and Office Conversion
- 6- Gypsum Work
- 7- Glass and Aluminum Cladding











## ▶ Porta Cabin Installaion

TPortacabin Global has built an excellent reputation for delivering affordable and reliable portable accommodation and storage across the KSA region. As a leader in manufacturing Prefabricated Cabins, Containerized Units, Prefabricated Buildings and Steel Structures, we empower our team of dedicated employees to deliver the high-quality portable cabins on time and within budget.

***Thameer Contracting Company has a Professional Management team in this field. Our team manage all the tasks Independently. Teamwork is our slogan...***

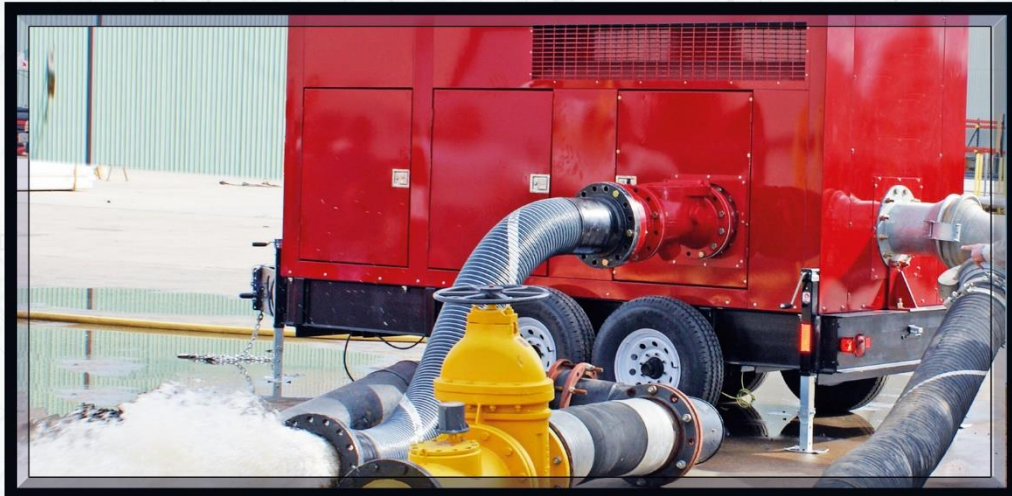






## ▶ Dewatering

Dewatering is the process of removing groundwater and superficial water from a construction site. Usually, this procedure is carried out before excavations, or to lower the water table on site. Dewatering methods can use pumps or evaporation.







## T Safety ( PPE-HSE )

### **PPE:**

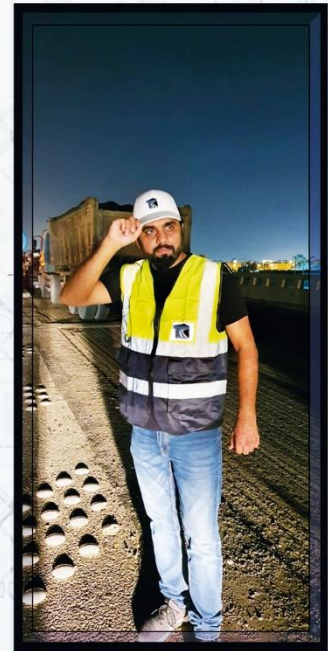
Personal protective equipment is protective clothing, helmets, goggles, or other garments or equipment designed to protect the wearer's body from injury or infection. The hazards addressed by protective equipment include physical, electrical, heat, chemicals, biohazards, and airborne particulate matter.

### **HSE:**

The law says that every business must have a policy for managing health and safety. A health and safety policy sets out your general approach to health and safety. It explains how you, as an employer, will manage health and safety in your business.... If you have five or more employees, you must write your policy down.

Safety signs are a type of sign designed to warn of hazards, indicate mandatory actions or required use of Personal protective equipment, prohibit actions or objects, identify the location of firefighting or safety equipment, or marking of exit routes.

In addition to being encountered in industrial facilities; safety signs are also found in public places and communities, at electrical pylons and Electrical substations, cliffs, beaches, bodies of water, on motorized equipment, such as lawn mowers, and areas closed for construction or demolition.







Logos  
Contractors and Clients



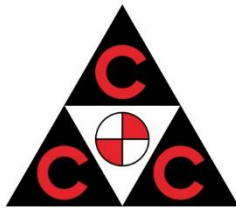
الشركة السعودية للكهرباء  
Saudi Electricity Company



ارامكو السعودية  
Saudi Aramco



جامعة الملك عبدالله  
للعلوم والتقنية  
King Abdullah University of  
Science and Technology







▶ Asphalt Equipment List



شركة الصخرة العربية للمقاولات  
**ARABIAN ROCK CONT.CO**



شركة الكايد إخوان  
Alkayid brothers company



شركة المسار الحديث المحدودة  
AL-MASAR AL-HADEETH CO. LTD



بلدية محافظة دومة الجندل  
Municipality of Dumat al-Jandal

المراعي  
**Almarai**



Adil Saeed Al- Harbi



www.nasjv.com





Logos  
Contractors and Clients







Logos  
Contractors and Clients







**Contract Details**

No.	Contractor/Subcontractor Company	Owner / Client /Contractor	Project Name and Location	Work of Scope	Amount
1	<b>Hyundai Heavy Industries Co., Ltd.</b>	Saudi Electricity	Jeddah South Thermal Power Plant	Supply Breakwater and Dewatering	<b>102.00 Million</b>
				Rock Core Material Supply	
				Management, Consulting and Manpower Supply	
2	<b>AJ Corporation Group Ltd.</b>	Search Results Web result with site links Arabian Petroleum Supply company (APSCO)	KAIA - Jeddah	Backfilling & Asphalt Work	<b>6.30 Million</b>
3	<b>Consolidated Contractor Company (CCC)</b>	Saudi Aramco	Jizan Refinery & Terminal Project ( EPC-4 & 5 )	Pipe line Excavation, Duct Bank, Foundation, Manholes and Culverts work	<b>4.50 Million</b>
4	<b>Bin Laden</b>	General Aviation Civil Authority (GACA)	KAIA - Jeddah	Removal Material	<b>5.30 Million</b>
				Sub Grade	
				Asphalt Work	
				Rental Equipment	
5	<b>El Seif Engineering</b>	Ministry of Housing Project	Dhaban	Rental Equipment	<b>3.70 Million</b>
			Jizan (PMV), Jizan S8, S10	Rental Equipment	
			Jizan	Material Supply	
6	<b>Shapoorji Pallonji Mideast (L.L.C)</b>	Ministry of Housing Project	Jeddah	S/A Base Course	<b>2.80 Million</b>
				Asphalt Work	
7	<b>Huta Hegerfeld</b>	Royal Commission Yanbu	Sea Port Yanbu HH-SEAPA-Supporting Berths	Asphalt Work	<b>40.00 Million</b>
		Emaar	KAEC	Material Supply	
		Benladin	KAIA - Jeddah	Rental Equipment	
8	<b>Al Harbi Industrial Development Co. Ltd.</b>	Ministry of Housing Project	Riyadh	Road Work	<b>3.11 Million</b>





## ▶ Asphalt Equipment List

No.	Contractor/Subcontractor Company	Owner / Client /Contractor	Project Name and Location	Work of Scope	Amount
9	<i>Al Soraiya Real Estate</i>	The Saudi Council of Industrialized Cities	Industrial Zone 4	Sub Base- Asphalt	<b>1.56 Million</b>
10	<i>Alfanar Co</i>	Saudi Electricity	Petrol Pump	Asphalt Work	<b>2.17 Million</b>
11	<i>Arkad</i>	Aramco	Khabsa Camp	Asphalt Work	<b>2.52 Million</b>
12	<i>Bin Dubais</i>	Makkah Municipality	Entrance Makkah Improvement and beauty project	Asphalt Work	<b>1.70 Million</b>
13	<i>Building Specialized Contracting Co</i>	Saudi Ready Mix	KAEC	Asphalt Work	<b>3.80 Million</b>
14	<i>Sinopec International Petroleum Service Corporation</i>	SWCC	PS1 Station Yanbu	Asphalt Work	<b>3.40 Million</b>
			PS2 Station Masajeed	Asphalt Work	
			PS1 Station Yanbu	Road Marking	
15	<i>Dar Arabia</i>	Binladen	Tallest Building	Curb Stone / Asphalt Work	<b>1.80 Million</b>
16	<i>Easy Harmony Contacting Est.</i>		HPRC Access Road	Road Work	<b>2.53 Million</b>
17	<i>Ghonaim International Co.</i>	Housing Project	Al Salama Jeddah	Road Work	<b>1.20 Million</b>
18	<i>Future Vision</i>	NHC	Taif	Asphalt Work	<b>1.90 Million</b>
19	<i>MAPA Construction</i>	Al Raida Housing Project	Jeddah Housing Project	Road Work	<b>4.67 Million</b>
20	<i>Majid Bin Saleh</i>	Private	Jeddah Sea Port	Asphalt Work	<b>1.30 Million</b>
21	<i>Marzouq K Al Sahil Contracting</i>	Factory	Jeddah	Asphalt Work	<b>1.00 Million</b>
22	<i>Mohd Bin Saeed Al Tawi</i>	Factory	Jeddah	Asphalt Work	<b>1.42 Million</b>





**Contract Details**

No.	Contractor/Subcontractor Company	Owner / Client /Contractor	Project Name and Location	Work of Scope	Amount
23	<i>Fast Finishing Contracting Co.</i>	Benladin	Expansion Masjid Haram	Excavation and Construction work	<b>1.87 Million</b>
24	<i>Yazan AlFedyah ( Yafco )</i>	Private		Asphalt Work	<b>1.46 Million</b>
25	<i>Seleiman AR Namlah Group</i>		Yanbu Port	Asphalt Work	<b>3 Million</b>
26	<i>TA Infra Projects Taif</i>	NWC	Taif	Earth Work	<b>40 Million</b>
27	<i>Yaseer Dawood Yaghmour</i>	Emaar	KAEC	Asphalt Work	<b>6.42 Million</b>
28	<i>Al Jazeera Factories For Steel</i>	JASCO	Factory	Road Work	<b>1.36 Million</b>
29	<i>Al Mahdad Quick Arch. Con. Co.</i>	Huta	Red Sea	Subgrade	<b>2.20 Million</b>
30	<i>Al Muhaidib Contracting Company</i>	Betro Rabigh	P4F Project	Supply Material	<b>1.40 Million</b>
31	<i>China Railway 18th Bureau Group Co. Ltd</i>	Yanbu	Royal Commission	Backfill Material	<b>1.20 Million</b>
32	<i>CIT</i>	Emaar	KAEC	Asphalt Work	<b>1.80 Million</b>
33	<i>Citi Scope</i>	MOH	Yanbu	Asphalt Work	<b>4.80 Million</b>
34	<i>Contraco</i>	Petro Rabigh	Rabigh	Earth Work and Removal Material	<b>7.0 Million</b>
35	<i>Al Bawani Co Ltd.</i>			Sub Base- Base course	<b>1.30 Million</b>
36	<i>A.R Sweilum Al Marwani Est.</i>	Emaar	KAEC	Asphalt Work	<b>3.00 Million</b>
37	<i>Azmeel General Contracting Co</i>	MOH	Rabigh	Asphalt Work	<b>8.40 Million</b>
38	<i>Al Rawaf Co</i>	National Housing Society	Madina	Earth Work	<b>20.00 Million</b>
				Asphalt Work	





**Contract Details**

No.	Contractor/Subcontractor Company	Owner / Client /Contractor	Project Name and Location	Work of Scope	Amount
39	<i>Al Huqair</i>	Yasmeen Mall	Jeddah	Asphalt Work	<b>1.50 Million</b>
40	<i>MASCO</i>		Madina	Backfill Material	<b>6.20 Million</b>
41	<i>Electrical Works and Maintenance Co. ( EWM)</i>	Projects Coordination Office in Taif Municipality	Taif	Milling and Asphalt work	<b>8.40 Million</b>
42	<i>Consolidated Contractor Company (CCC)</i>	Emaar	KAEC	Earth Work	<b>1.20 Million</b>
43	<i>Keller Turki Co. LTD Saudi Arabia</i>	Petrofac	Rabigh Phase II	Gravel Supplier	<b>4.40 Million</b>
44	<i>IC Construction Company ( IC )</i>	King Abdullah University of Science and Technology (KAUST)	Thuwal	Asphalt Work	<b>6.23 Million</b>
				Material Supply	
45	<i>Al Bawani Co Ltd.</i>	Aramco National Guard Family Compound	Thuwal	SB and BC Material Supply	<b>4.56 Million</b>
46	<i>Saudi Archirodon Ltd.</i>	Saudi Electricity	Jeddah South Thermal Power Plant	Manpower Supply	<b>1.00 Million</b>
47	<i>Norsa Contracting Co.</i>	Zalom municipality	Zalom	buildings Work	<b>2.12 Million</b>
48	<i>Norsa Contracting Co.</i>	Arabian Rock Cont.Co	Sakaka	Supply and apply base course work	<b>0.87 Million</b>
49	<i>Norsa Contracting Co.</i>	Alkayid brothers company	Al-Jouf	Excavation and backfilling	<b>1.28 Million</b>
50	<i>Norsa Contracting Co.</i>	Alkayid brothers company	Qurayyat	Paint and cat eyes work	<b>1.06 Million</b>
51	<i>Norsa Contracting Co.</i>	Zaid Abdulazizi Hamoud	Sakaka	buildings works	<b>1.46 Million</b>
52	<i>Norsa Contracting Co.</i>	Salman Omar Alshamri	Jeddah	buildings works	<b>1.30 Million</b>
53	<i>Norsa Contracting Co.</i>	Saad Salman Alshamri	Rabigh	buildings works	<b>1.19 Million</b>
54	<i>Norsa Contracting Co.</i>	Sultana Marji Alshamri	Al-Jouf	buildings works	<b>1.37 Million</b>
55	<i>Norsa Contracting Co.</i>	Ahmed Hamad Aldahya	Yanbu	buildings works	<b>1.05 Million</b>







**Contract Details**

No.	Contractor/Subcontractor Company	Owner / Client /Contractor	Project Name and Location	Work of Scope	Amount
56	<i>Norsa Contracting Co.</i>	Naif Ben Mubarak Aldameri	Sakaka	buildings works	<b>1.04 Million</b>
57	<i>Norsa Contracting Co.</i>	Alkayid brothers company	Sakaka	Apply the external fence of the project	<b>0.49 Million</b>
58	<i>Norsa Contracting Co.</i>	Alkayid brothers company	Sakaka	Concrete, wall and waterproofing works	<b>1.02 Million</b>
59	<i>Norsa Contracting Co.</i>	Almasar Alhadeeth Co.	Al-Jouf	Backfilling and excavation works	<b>1.08 Million</b>
60	<i>Norsa Contracting Co.</i>	Shar Company	Jeddah	Apply asphalt and base course	<b>1.05 Million</b>
61	<i>Norsa Contracting Co.</i>	Almarai Company	Sakaka	Warehouse construction work	<b>0.66 Million</b>
62	<i>Norsa Contracting Co.</i>	Zaloom Municipality	Zaloom	Drainage and water safety works	<b>2.10 Million</b>
63	<i>Norsa Contracting Co.</i>	Abuajram Municipality	Abuajram	Road paving and preparation works	<b>0.92 Million</b>
64	<i>Norsa Contracting Co.</i>	Sawyer Municipality	Sawyer	Road paving and preparation works	<b>0.42 Million</b>
65	<i>Norsa Contracting Co.</i>	Abdullah Hamad Al Abdullah Al Tamimi Est.	Sakaka	Grubbing and asphalt works	<b>0.65 Million</b>
66	<i>Norsa Contracting Co.</i>	Sawyer Municipality	Sawyer	Asphalt maintenance works	<b>0.24 Million</b>
67	<i>Norsa Contracting Co.</i>	Dawmat Al Jandal Municipality	Dawmat AlJandal	Road maintenance works	<b>1.61 Million</b>
68	<i>Norsa Contracting Co.</i>	Al Jawf Municipality	Al Jouf	Drainage and water safety works	<b>2.41 Million</b>
69	<i>Norsa Contracting Co.</i>	Mohammed A. Al Swailem Co.	Sakaka	Infrastructure works	<b>3.87 Million</b>
70	<i>Norsa Contracting Co.</i>	Abuajram Municipality	Abuajram	Road paving and preparation works	<b>0.98 Million</b>
71	<i>Norsa Contracting Co.</i>	Abdullah Al Saihati Group G.C.	Al Jouf	Earth and asphalt work	<b>1.02 Million</b>
72	<i>Norsa Contracting Co.</i>	Jam construction Est.	Sakaka	Road paving and preparation works	<b>0.52 Million</b>





**Contract Details**



Contractor	Client
Hyundai Heavy Industries Co.,LTD.	Saudi Electricity Company
	 الشركة السعودية للكهرباء Saudi Electricity Company
Date / Year / Ref.	15/12/2014/JSPP-C-Offshore-09
Project Name / Location	Jeddah South Thermal Power Plant
Project Scope	Management, Consultant and Manpower Supply
Value of Project	5,850,000.00

Contractor	Client
Hyundai Heavy Industries Co.,LTD.	Saudi Electricity Company
	 الشركة السعودية للكهرباء Saudi Electricity Company
Date / Year / Ref.	10-02-2014 / SSPP-LPO/Gravel-0025
Project Name / Location	Jeddah South Thermal Power Plant
Project Scope	Screen Soil / Material Supply
Value of Project	10,250,000.00





**Contract Details**



Contractor	Client
Hyundai Heavy Industries Co.,LTD.	Saudi Electricity Company
	 الشركة السعودية للكهرباء Saudi Electricity Company
Date / Year / Ref.	31-05-2015 / JSPP-C-019-03
Project Name / Location	Jeddah South Thermal Power Plant
Project Scope	Rock Core Meterial Supply
Value of Project	50,831,794.00



Contractor	Client
Hyundai Heavy Industries Co.,LTD.	Saudi Electricity Company
	 الشركة السعودية للكهرباء Saudi Electricity Company
Date / Year / Ref.	01-06-2015 / HHI
Project Name / Location	Jeddah South Thermal Power Plant
Project Scope	Road work
Value of Project	5,630,000.00





**Contract Details**

Contractor	Client
Binladen Group ( PBAD )	General Aviation Civil Authority (GACA )
 مجموعة بن لادن السعودية SAUDI BINLADIN GROUP	 الهيئة العامة للطيران المدني General Authority of Civil Aviation
Date / Year / Ref.	22-02-2018 / KAIA-P1072-2018/1491 & A
Project Name / Location	New Jeddah Airport
Project Scope	Garbage Removal
Value of Project	4,310,000.00



Contractor	Client
Binladen Group ( ABCD )	Emaar ( KAEC )
 مجموعة بن لادن السعودية SAUDI BINLADIN GROUP	
Date / Year / Ref.	05-04-2018 / RS0005 0...
Project Name / Location	KAEC / Huta - PH 1C1 E&F3
Project Scope	Polymar Modification Asphalt Work 2 Layers
Value of Project	2,200,000.00





**Contract Details**



Contractor	Client
Binladen Group ( PBAD )	General Aviation Civil Authority ( Gaca )
 مجموعة بن لادن السعودية SAUDI BINLADIN GROUP	 الهيئة العامة للطيران المدني General Authority of Civil Aviation
Date / Year / Ref.	10-02-2018 / Cont/KAA/QS/ 069/2018
Project Name / Location	New Jeddah Airport
Project Scope	Sub Grade Material Supply
Value of Project	1,950,000.00



Contractor	Client
Binladen Group ( ABCD )	General Aviation Civil Authority ( Gaca )
 مجموعة بن لادن السعودية SAUDI BINLADIN GROUP	 الهيئة العامة للطيران المدني General Authority of Civil Aviation
Date / Year / Ref.	14-05-2018 / KAIA-P1072-2018/1541
Project Name / Location	New Jeddah Airport
Project Scope	Rental Equipment
Value of Project	1,340,000.00





**Contract Details**

Contractor	Client
Binladen Group ( PBAD )	Emaar ( KAEC )
 مجموعة بن لادن السعودية SAUDI BINLADIN GROUP	 EMAAR
Date / Year / Ref.	15-10-2017 / RS0001 0...
Project Name / Location	KAEC / Huta - PH 1C1 E&F3
Project Scope	Asphalt Work 2 Layers
Value of Project	6,200,000.00

Contractor	Client
Binladen Group ( PBAD )	Emaar ( KAEC )
 مجموعة بن لادن السعودية SAUDI BINLADIN GROUP	 EMAAR
Date / Year / Ref.	15-12-2017 / RS0005 0...
Project Name / Location	KAEC / Huta - PH 1C1 E&F3
Project Scope	Polymer & Marshal Modified Asphalt Work
Value of Project	2,800,000.00





**Contract Details**

Contractor	Client
AJ Cooperation Group	Arabian Petroleum Supply company (Apsco )
<p><b>A.J Corporation</b>  <b>A.J Corporation (Saudi Arabia)</b></p>	<p><b>APSCO</b>  <b>LUBRICANTS</b></p>
Date / Year / Ref.	09-05-2017 / P.O 3400 / P.O 3485
Project Name / Location	KAIA / New Jeddah Airport
Project Scope	Backfilling and Asphalt work
Value of Project	<b>6,340,000.00</b>

Contractor	Client
Consolidated Contractor Company ( CCC )	Saudi Aramco
	<p><b>ارامكو السعودية</b>  <b>Saudi Aramco</b></p>
Date / Year / Ref.	10-01-2017 / SUBC-CCC-JRTF-00089
Project Name / Location	Jizan Refinery & Terminal Project ( EPC - 4&5)
Project Scope	Pipe Excavation and Installation
Value of Project	<b>4,570,000.00</b>





**Contract Details**

Contractor	Client
Electrical Work & Maintenance ( EWM )	Saudi Electric Company
	 الشركة السعودية للكهرباء Saudi Electricity Company
Date / Year / Ref.	22/8/2017
Project Name / Location	Taif
Project Scope	Asphalt Work
Value of Project	2,250,000.00

Contractor	Client
China Railway 18th Bureau Group Co. Ltd.	Royal Commission
	 المملكة العربية السعودية KINGDOM OF SAUDI ARABIA
Date / Year / Ref.	29-07-2017 / 7-SA-WZ-2017-YB© - SA-235
Project Name / Location	Yanbu University / Yanbu
Project Scope	Material Supply
Value of Project	100,000.00





**Contract Details**



Contractor	Client
Al Rawaf Co.	Ministry of Housing
	
Date / Year / Ref.	30-09-2019 / 29/41
Project Name / Location	Ministry of Housing / Madinah
Project Scope	Subbase / Asphalt work
Value of Project	28,000,000.00



Contractor	Client
International Center for Contracting Co ( IC )	King Abdullah University of Science and Technology
	
Date / Year / Ref.	03-03-2015 / JDH/104/753
Project Name / Location	KAUST / Thuwal
Project Scope	Material Supply / Asphalt Work
Value of Project	12,520,000.00





**Contract Details**



Contractor	Client
Contraco Contracting Office Company Ltd.	Petroleum refineries company ( Petro Rabigh )
	
Date / Year / Ref.	25/5/2019
Project Name / Location	Petro Rabigh / Rabigh
Project Scope	Excavation / Removal Material
Value of Project	<b>3,570,000.00</b>


Contractor	Client
Azmeel Contracting Company	Ministry of Housing
	
Date / Year / Ref.	12-01-2018 / A2-A5-001
Project Name / Location	Ministry of Housing / Rabigh
Project Scope	Asphalt Work
Value of Project	<b>8,900,000.00</b>





## Contract Details

Contractor	Client
Mapa Construction Company	Al Raidah Investment Company
	
Date / Year / Ref.	01-12-2018 / 321
Project Name / Location	Al Raidah Housing Complex Project
Project Scope	Subbase and Aphalt work
Value of Project	8,550,000.00

Contractor	Client
Dar Al Arabia	Binladen ( ABCD )
	
Date / Year / Ref.	12-04-2017/WO-GC 032-01517-08
Project Name / Location	JEC Earth Moving Package / Jeddah
Project Scope	Curb Stone
Value of Project	1,792,000.00





**Contract Details**



Contractor	Client
Ghonaim International Co.	Sedco Development Company
	
Date / Year / Ref.	12-04-2016/PMO-GAR-LOA-32-2016-04-12
Project Name / Location	Gardenia Residence / Jeddah
Project Scope	Subbase / Asphalt Work
Value of Project	4,650,000.00



Contractor	Client
Future Vision Company	Ministry of Transport ( MOT )
	
Date / Year / Ref.	13-11-2019
Project Name / Location	Governorate Roads / Taif
Project Scope	Asphalt Work
Value of Project	3,440,000.00





## Contract Details

Contractor	Client
Arkad	Saudi Aramco
	
Date / Year / Ref.	20/6/2017
Project Name / Location	P114/MGS-P2-WR / 09-00/008/Rev.00
Project Scope	Master Gas System Expansion Phase 2
Value of Project	2,520,000.00



Contractor	Client
Bin Dubais	Ministry of Transport
	
Date / Year / Ref.	03-09-2016
Project Name / Location	Entrance Makkah Improvement / Makkah
Project Scope	Asphalt Work
Value of Project	1,760,000.00





**Contract Details**

Contractor	Client
Sinopec Engineering Group Saudi Co. Ltd.	Saline Water Conversion Corporation (SWCC)
 <b>Sinopec International Petroleum Service Corporation</b>	 المؤسسة العامة لتخليص المياه المالحة Saline Water Conversion Corporation
<b>Date / Year / Ref.</b>	14-06-2019/PS1/SIPSC-SWCC / WTSP3-0174
<b>Project Name / Location</b>	PS1-PS2 / Power Plant Yanbu (SWCC)
<b>Project Scope</b>	Asphalt Work / Road Marking
<b>Value of Project</b>	<b>3,470,000.00</b>


Contractor	Client
Easy Harmony Contracting Est.	Saline Water Conversion Corporation
	 <b>Sinopec International Petroleum Service Corporation</b>
<b>Date / Year / Ref.</b>	02-07-2019/Yesmu-Adil-Swcc-WTSP3-01
<b>Project Name / Location</b>	HPRC Access Road / Madinah
<b>Project Scope</b>	Earth work and Super Pave Asphalt
<b>Value of Project</b>	<b>6,230,000.00</b>





**Contract Details**



Contractor	Client
Shapoorji Pallonji Mideast ( L.L.C.) Saudi Arabia	Olive Arabia Co. LTD.
	
Date / Year / Ref.	23-03-2016/AS/22 02 16 /DT/MDP809
Project Name / Location	Mayasem Development Project / Jeddah
Project Scope	S/A Sub Base and Asphalt work
Value of Project	3,800,000.00



Contractor	Client
Huta	Sapco III
	
Date / Year / Ref.	1/11/2010
Project Name / Location	Power Plant Rabigh
Project Scope	Excavation and Backfill Work
Value of Project	8,240,000.00





## ▶ Asphalt Equipment List

Contractor	Client
Huta Marine Wroks Ltd.	Saudi Ports Authority
	
Date / Year / Ref.	04-10-2016 / 5113762
Project Name / Location	HH-SEAPA / Yanbu Commercial Port
Project Scope	Asphalt work
Value of Project	3,640,000.00

Contractor	Client
Huta Hegerfeld	General Authority Civil Aviation ( Gaca )
	
Date / Year / Ref.	04-11-2017
Project Name / Location	New Jeddah Airport
Project Scope	Material Supply / Rental Equipment
Value of Project	2,225,000.00





**Contract Details**



Contractor	Client
El-Seif Engineering	Ministry of Interior ( MOI )
	 <b>Ministry of Interior</b> Kingdom of Saudi Arabia
Date / Year / Ref.	2012 / HR No. 08856
Project Name / Location	P133.1 ( S-08 ) Abu Arish
Project Scope	Material Supply / Rental Equipment
Value of Project	<b>3,250,000.00</b>

Contractor	Client
El-Seif Engineering	Ministry of Interior ( MOI )
	 <b>Ministry of Interior</b> Kingdom of Saudi Arabia
Date / Year / Ref.	15-12-2016 / P133/SA/ PMV04
Project Name / Location	Southeran Border Housing Compoud-Jizan
Project Scope	Rock Meterial Supply
Value of Project	<b>4,665,000.00</b>





**Contract Details**



Contractor	Client
Norsa Contracting Co.	Zalom municipality
	
Date / Year / Ref.	17-12-2015 / NS-171215
Project Name / Location	Zalom municipality buildings
Project Scope	buildings Work
Value of Project	<b>2,123,915.00</b>



Contractor	Client
Norsa Contracting Co.	Arabian Rock Cont.Co
	
Date / Year / Ref.	03-02-2019 / NS-030219
Project Name / Location	National Housing Company project in Sakaka
Project Scope	Supply and apply base course work
Value of Project	<b>870,000.00</b>





**Contract Details**

Contractor	Client
Norsa Contracting Co.	Alkayid brothers company
	
Date / Year / Ref.	05-01-2009 / NS-050109
Project Name / Location	Agricultural roads in 11th group / Al-Jouf region
Project Scope	Excavation and backfilling
Value of Project	1,285,600.00

Contractor	Client
Norsa Contracting Co.	Alkayid brothers company
	
Date / Year / Ref.	05-01-2009 / NS-0501091
Project Name / Location	roads maintenance project / Qurayyat
Project Scope	Paint and cat eyes work
Value of Project	1,065,000.00





**Contract Details**

Contractor	Client
Norsa Contracting Co.	Zaid Abdulazizi Hamoud
<p><b>NORSA</b></p>	<b>Zaid Abdulazizi Hamoud Co.</b>
Date / Year / Ref.	20-10-2009 / NS-201009
Project Name / Location	Residential Villa
Project Scope	buildings works
Value of Project	<b>1,460,000.00</b>

Contractor	Client
Norsa Contracting Co.	Salman Omar Alshamri
<p><b>NORSA</b></p>	<b>Salman Omar Alshamri Co.</b>
Date / Year / Ref.	12-08-2007 / NS-120807
Project Name / Location	Residential Building
Project Scope	buildings works
Value of Project	<b>1,300,000.00</b>





**Contract Details**

Contractor	Client
Norsa Contracting Co.	Mohammed A. Al Swailem Co.
Date / Year / Ref.	09-07-2018 / NS-090718
Project Name / Location	Northern housing / Sakaka
Project Scope	Infrastructure works
Value of Project	<b>3,877,303.00</b>

Contractor	Client
Norsa Contracting Co.	Abujram Municipality
Date / Year / Ref.	04-07-2018 / NS-040718
Project Name / Location	Asphalting, sidewalks and lighting of Abujram cntere / Abujram
Project Scope	Road paving and preparation works
Value of Project	<b>987,750.00</b>

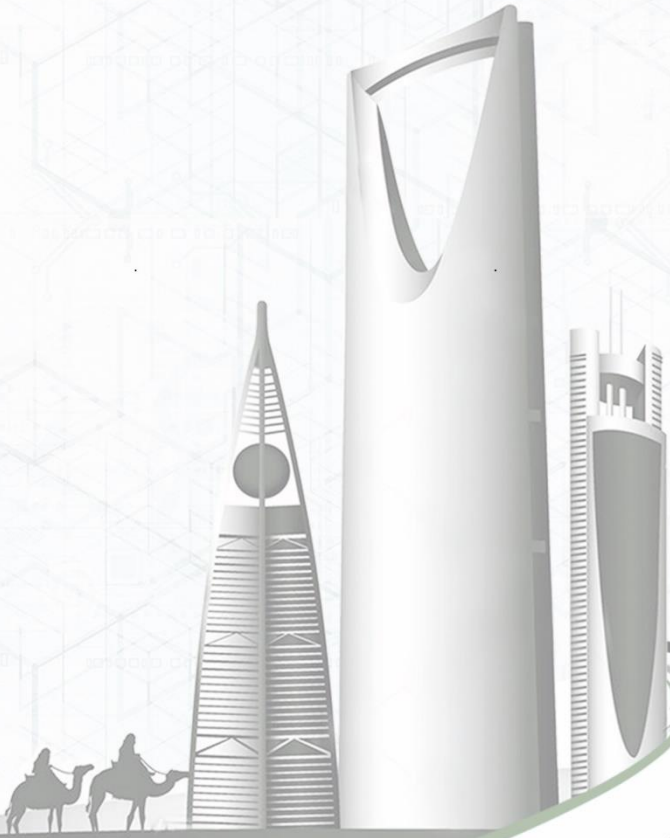


شركة مسارات الأختيار للتشغيل والميانه  
PROGRESSIVE CHOICE MANPOWER LIMITED



**Joint Venture**

Profile 2023







## ***Infrastructure Works:***

- Buildings Works
- Road Works
- Asphalt Plant
- Crasher Plant
- Rental Equipments

## **Address:**

Kingdom of Saudi Arabia  
3565 Street Ameer Saad Bin  
Abdul Rehman Al Awal 8807  
District Al Faiha, Riyadh  
**Mob: 054 1111 743 - 054 1414 632**  
**E-Mail: [info@thameerco.com](mailto:info@thameerco.com)**